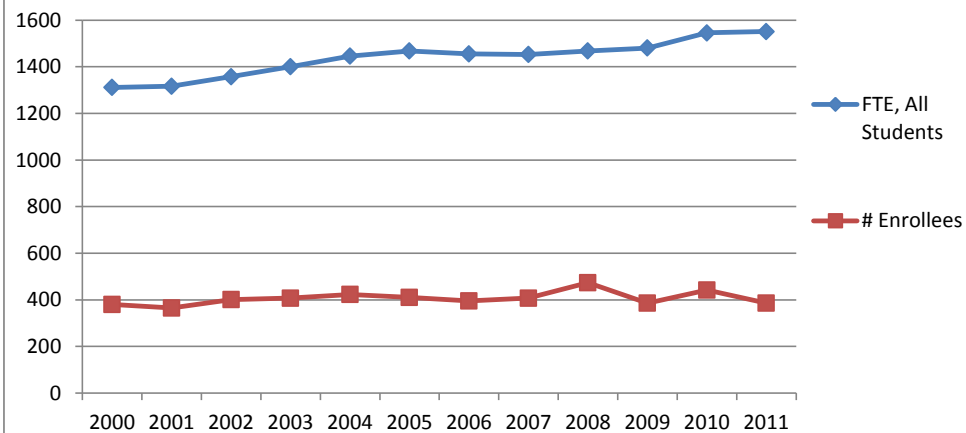
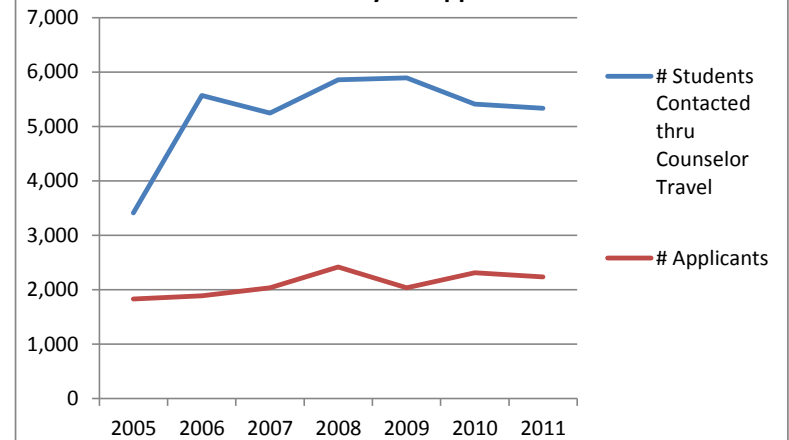


Selected Demand and Enrollment Statistics, 2000 through 2011

	Fall of Year:											
	2000	2001	2002	2003	2004	2005	2006	2007	2008	2009	2010	2011
Total Fall Enrollment:												
Full-time Students	1297	1299	1341	1382	1431	1448	1436	1431	1447	1464	1527	1530
Part-time Students	42	42	43	58	48	60	68	75	76	68	66	89
TOTAL, All Students	1339	1341	1384	1440	1479	1508	1504	1506	1523	1532	1593	1619
FTE, All Students	1311.5	1315.9	1357	1399.7	1445.9	1467.3	1454.5	1452.7	1467.7	1480.5	1545.1	1551.1
Change in FTE from Previous Year		0.3%	3.1%	3.1%	3.3%	1.5%	-0.9%	-0.1%	1.0%	0.9%	4.4%	0.4%
Admissions Activity, all students entering fall of year shown:												
# Campus Visits, students entering fall						1,597	1,704	1,809	2,128	1,957	1,990	1,922
Change in Visits from Previous Year							6.7%	6.2%	17.6%	-8.0%	1.7%	-3.4%
# Students Contacted thru Counselor Travel						3,412	5,572	5,246	5,856	5,895	5,409	5,333
Change in Counselor Travel Contacts from Previous Year							63.3%	-5.9%	11.6%	0.7%	-8.2%	-1.4%
# Referrals						66	35	32	27	104	193	354
Admissions Yield, all students entering fall of year shown:												
# Applicants	1,253	1,458	1,413	1,650	1,844	1,829	1,887	2,036	2,416	2,038	2,314	2,238
Change in Applicants from Previous Year		16.4%	-3.1%	16.8%	11.8%	-0.8%	3.2%	7.9%	18.7%	-15.6%	13.5%	-3.3%
# Acceptances	1,020	1,150	1,110	1,219	1,348	1,219	1,216	1,368	1,660	1,446	1,644	1,574
# Enrollees	380	365	401	407	423	411	395	407	473	386	442	386
# Freshmen	362	341	375	381	390	388	364	377	461	366	421	363
# Transfers	18	23	26	26	33	23	31	31	12	20	21	23
Selectivity - Accepts as % of Applicants	81.4%	78.9%	78.6%	73.9%	73.1%	67%	64%	67%	69%	71%	71%	70%
Yield - Enrollees as % of Acceptances	37.3%	31.7%	36.1%	33.4%	31.4%	34%	32%	30%	28%	27%	27%	25%
Change in Yield from Previous Year		-14.8%	13.8%	-7.6%	-6.0%	7.4%	-3.7%	-8.4%	-4.2%	-6.3%	0.7%	-8.8%
Admissions Quality, First-time Freshmen:												
Mean Composite SAT	1150	1160	1158	1168	1161	1177	1167	1164	1181	1198	1183	1186
Average GPA	3.72	3.70	3.74	3.71	3.76	3.81	3.82	3.78	3.75	3.75	3.75	3.75
Demographics, All New Incoming Students:												
% Male						46%	46%	43%	44%	44%	46%	47%
% Female						54%	54%	57%	56%	56%	54%	53%
% Out-of-State	29.0%	22.0%	21.0%	30.0%	32.0%	28%	33%	38%	39%	37%	41%	39%
% Domestic Minority	2.8%	2.3%	3.2%	4.5%	6.7%	5.8%	7.1%	6.6%	8.9%	10.1%	11.4%	12.4%
% International	2.5%	2.1%	2.4%	1.8%	0.8%	3.4%	3.6%	5.6%	3.7%	5.5%	5.0%	7.2%
% Not Domestic White Freshmen	5%	4.1%	5.2%	5.9%	6.9%	9.2%	10.7%	12.2%	12.6%	15.6%	16.4%	19.6%

1519.3

	Fall of Year:											
	2000	2001	2002	2003	2004	2005	2006	2007	2008	2009	2010	2011
Financial Aid, First-time Freshmen:												
Average Family Income						\$82,787	\$99,735	\$99,695	\$109,754	\$104,856	\$106,530	\$108,503
% With Need						79.9%	69.9%	72.3%	71.3%	72.0%	78.6%	78.5%
% of Need Met						78.6%	85.2%	85.1%	86.7%	86.1%	90.0%	90.0%
Average Need-based Grant						\$15,668	\$17,293	\$17,666	\$18,469	\$21,571	\$21,298	\$22,832
Average Merit-based Grant						\$12,358	\$11,792	\$15,414	\$16,761	\$13,609	\$14,515	\$15,718
New Student Discount Rate						49.2%	49.0%	48.9%	53.2%	55.1%	56.7%	57.7%

FTE Enrollment and # New Enrollees, 2000 to 2011**Admissions Activity vs. Application Counts****Admissions Yield vs. % of Students from Out of State and % of Students of Color/International**